

HHS Covid rules for lettings

Entry / Exit

Please follow Public Health England advice for good hygiene.

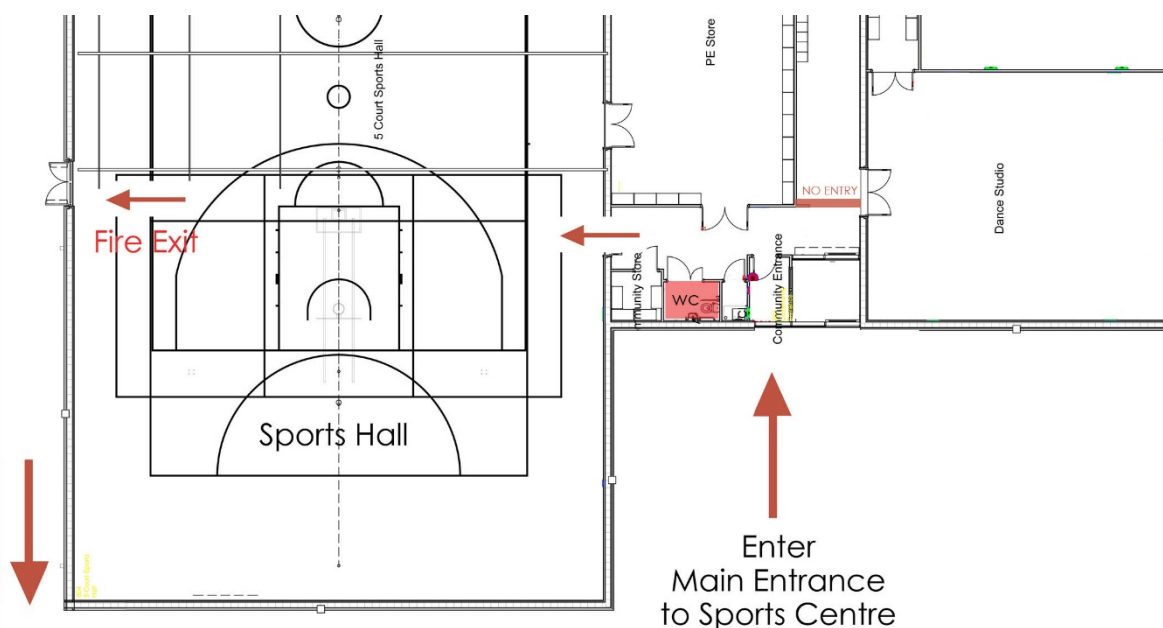
As a minimum, all participants must wash their hands before coming to the school grounds and as soon as possible when they leave.

Track and Trace - Organiser to please keep a register of class attendance on site

- Organiser to bring hand sanitiser which **MUST** be used when entering and leaving the building.
- Attendees to arrive at the facility in sports kit and travel home to change/shower. Use of changing rooms and showering facilities should be avoided (these will be locked).
- Enter using sports centre main entrance.
- Exit by fire exit and gate. Careful consideration must be taken to ensure the correct social distancing is in place and there is no crossover.
- Parents to park in alternate bays thus adhering to social distancing in public areas
- Please use your own equipment (balls, water bottles) and avoid touching other equipment such as goals.
- Litter should be removed by the person who brought it with them after the session.
- Do not congregate and socialise after your session is over.
- Parents are asked to wait in their cars.
- Door handles and equipment used to be wiped down by Organiser on leaving the site.

Admin

Please make sure you email a copy of your risk assessment prior to your first session.



Exit through Fire Exit and Side Gate
back to front of building and Car Park